



Live, work
and play
your way

JAYPEE GREENS
THE
KOVE

JAYPEE GREENS
THE
KOVE





JAYPEE GREENS
THE
KOVE

**Living can break away from the ordinary.
Dreams can see the light of reality.**

The mind can enrich itself in heavenly surroundings.

**With the homes that come in varying sizes, making
your choice wider. It's all there to experience, at**

The Kove

**Come, relish urban living that comes with modern
amenities, including uninterrupted water and
power supply.**

**Just move in, for an enriching new phase of your
life.**



JAYPEE GREENS
THE
KOVE



Master Plan

JAYPEE GREENS
THE
KOVE



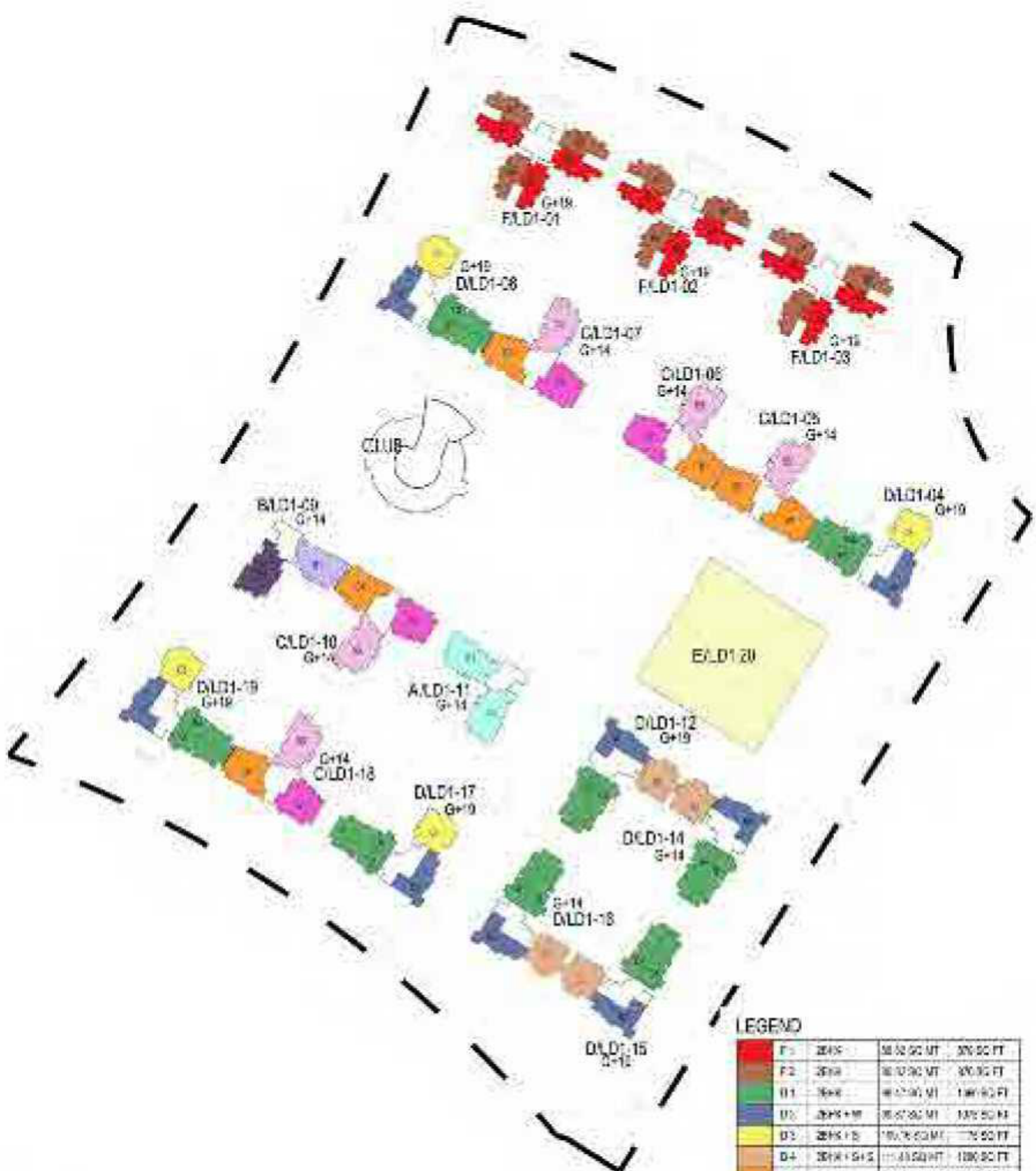
JAYPEE GREENS
THE KOVE

Numbering Plan



Numbering Plan

JAYPEE GREENS
THE
KOVE



LEGEND

| | | | |
|----|------------|-------------|-----------|
| F1 | 2BHK | 38.52 SQ MT | 370 SQ FT |
| F2 | 2BHK | 38.17 SQ MT | 370 SQ FT |
| B1 | 3BHK | 48.27 SQ MT | 490 SQ FT |
| D1 | 2BHK + W | 35.27 SQ MT | 347 SQ FT |
| D3 | 2BHK + B | 35.78 SQ MT | 350 SQ FT |
| D4 | 2BHK + G+S | 33.43 SQ MT | 320 SQ FT |
| C1 | 3BHK | 32.81 SQ MT | 322 SQ FT |
| C2 | 3BHK + W | 34.28 SQ MT | 330 SQ FT |
| C3 | 3BHK | 32.81 SQ MT | 322 SQ FT |
| B1 | 3BHK + W | 35.27 SQ MT | 347 SQ FT |
| D2 | 2BHK + W | 35.28 SQ MT | 347 SQ FT |
| A1 | 4BHK + W | 74.18 SQ MT | 730 SQ FT |
| A2 | 4BHK + W | 74.18 SQ MT | 730 SQ FT |



Cluster Plan Type B

JAYPEE GREENS
THE
KOVE



3BHK+W: Total Area - 150.96 sq. mt. (1625 sq. ft.) approx.

JAYPEE GREENS
THE
KOVE

Cluster Plan Type C-05



3BHK: Total Area - 126.81 sq. ft. (1365 sq. ft.) approx.

3BHK+W: Total Area - 146.78 sq. ft. (1580 sq. ft.) approx.